

# THE LONDON RESORT

## The London Resort Development Consent Order

BC080001

### Environmental Statement Volume 3: Figures

#### Figure 12.52 Mitigation and Enhancements – Hydrology

Document reference: 6.3.12.52

Revision: 00

December 2020

Planning Act 2008

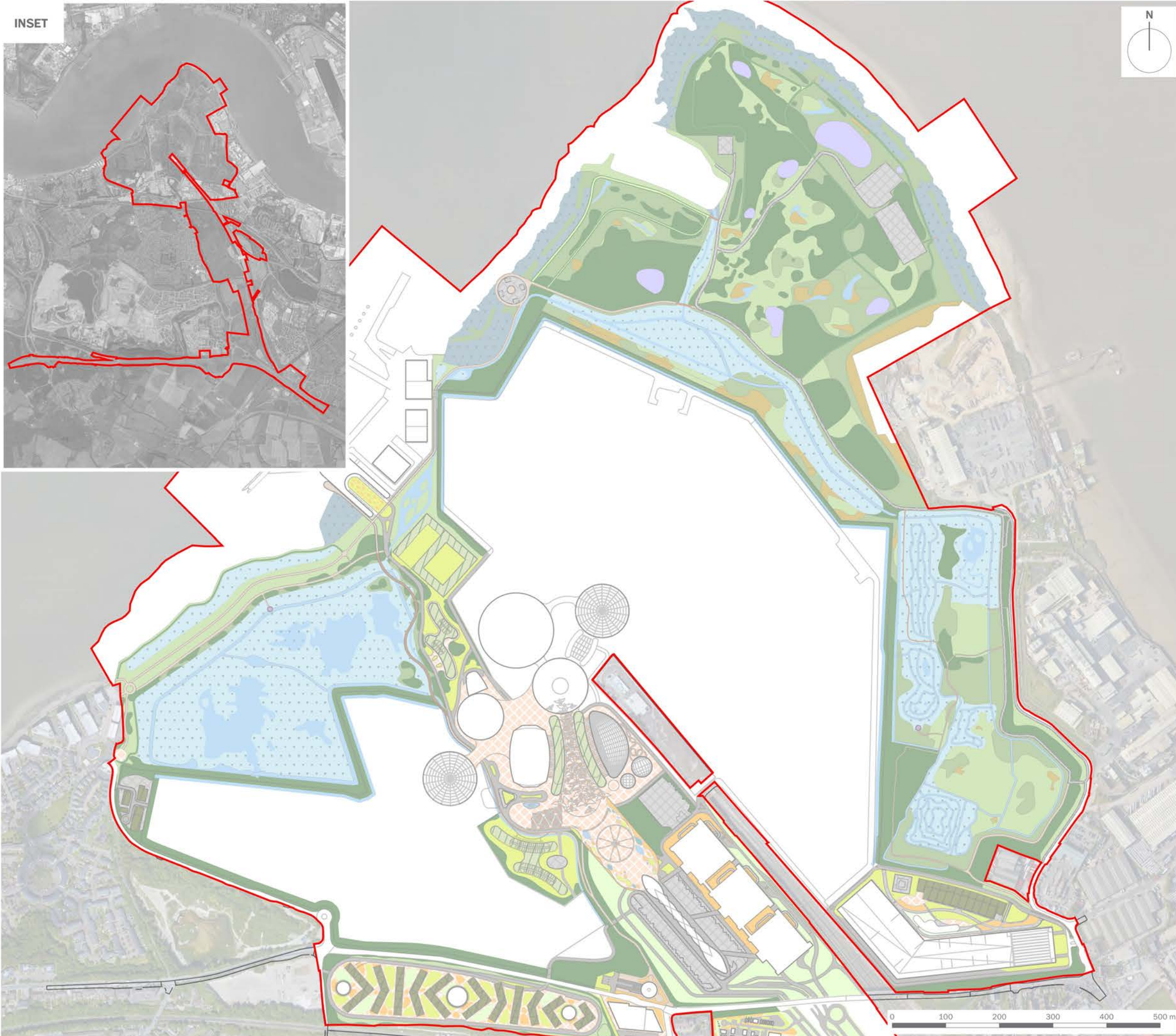
The Infrastructure Planning (Applications: Prescribed Forms and Procedure) Regulations 2009

Regulation 5(2)(a)

The Infrastructure Planning (Environmental Impact Assessment) Regulations 2017

Regulation 12(1)

[This page is intentionally left blank]



- Order Limits
- Buildings
- Open Grassland and Sparse Vegetation
- Ornamental Shrub Planting
- Hoggin Path
- Lawn
- Green Roofs
- Brown Roofs
- Boardwalks (Width Varies)
- Hardstanding
- Ditches and Perimeter Swale
- Leacheate Ponds
- Ponds
- Bare Disturbed Substrate
- Rain Garden Planting
- Woodland and Dense Scrub
- Reedbeds
- Permanent Water Bodies
- Plaza and Public Open Space
- Mown Path
- Salt Marsh
- Scattered Scrub and Rank Grassland
- Wildflower Meadow Verge with Trees
- Highways Land

client  
**London Resort Company Holdings Limited**

project title  
**The London Resort**

drawing title  
**Figure 12.52: Mitigation and Enhancements - Hydrology**

date	<b>17 DECEMBER 2020</b>	drawn by	<b>JTF</b>
drawing number	<b>edp5988_d108d</b>	checked	<b>ND</b>
scale	<b>1:7,500 @ A3</b>	QA	<b>GY</b>